

Love Windermere Partnership

...An introduction



Name: Alison Whalley: Environment Agency
Job Title: Love Windermere Partnership Manager

Date: 11th October 2023

X: @LoveWindermere

Instagram: love.windermere



- The Environment Agency's remit is to create better places for people and wildlife, and support sustainable development.
- We consider the value of the Water Environment as a whole
- – how the natural water cycle provides for and is affected by Humans and Nature. This includes water resources, flood risk management and water quality.
- We deliver outcomes through both regulation and working in partnership.



The Love Windermere Partnership

Long Term 20 year Vision:



Windermere lake, its upstream catchment and downstream waterbodies enjoy good water quality and rich biodiversity. Improvements in land and water management mean that the catchment is more resilient to the impacts of climate change; and can continue to support the local economy as well as the wellbeing of its communities. The communities of the catchment recognise their role as custodians, they support and are actively engaged in the multi-agency working arrangements.



Pressures - Nutrients and Climate Change are the biggest pressures:

Nutrients: Phosphorus and nitrogen are two nutrients that enter the lake from a variety of sources. They have a similar effect to fertiliser, providing a food source for plants and algae. The main inputs are from **wastewater, septic tanks and private sewage systems** and **land management**. Sediment in the bed of the lake, boats and wildfowl also contribute.

Climate change: We are already seeing the impact of climate change on Windermere. The average temperature of Windermere has increased by +1.7C in the last 70 years. This, together with high levels of nutrients encourages algal growth and cyanobacterial blooms, leading to a number of issues within Windermere, including reduced visibility and lower dissolved oxygen concentrations, which can affect lake ecology.

Water Quality is also affected by:

Extreme weather patterns

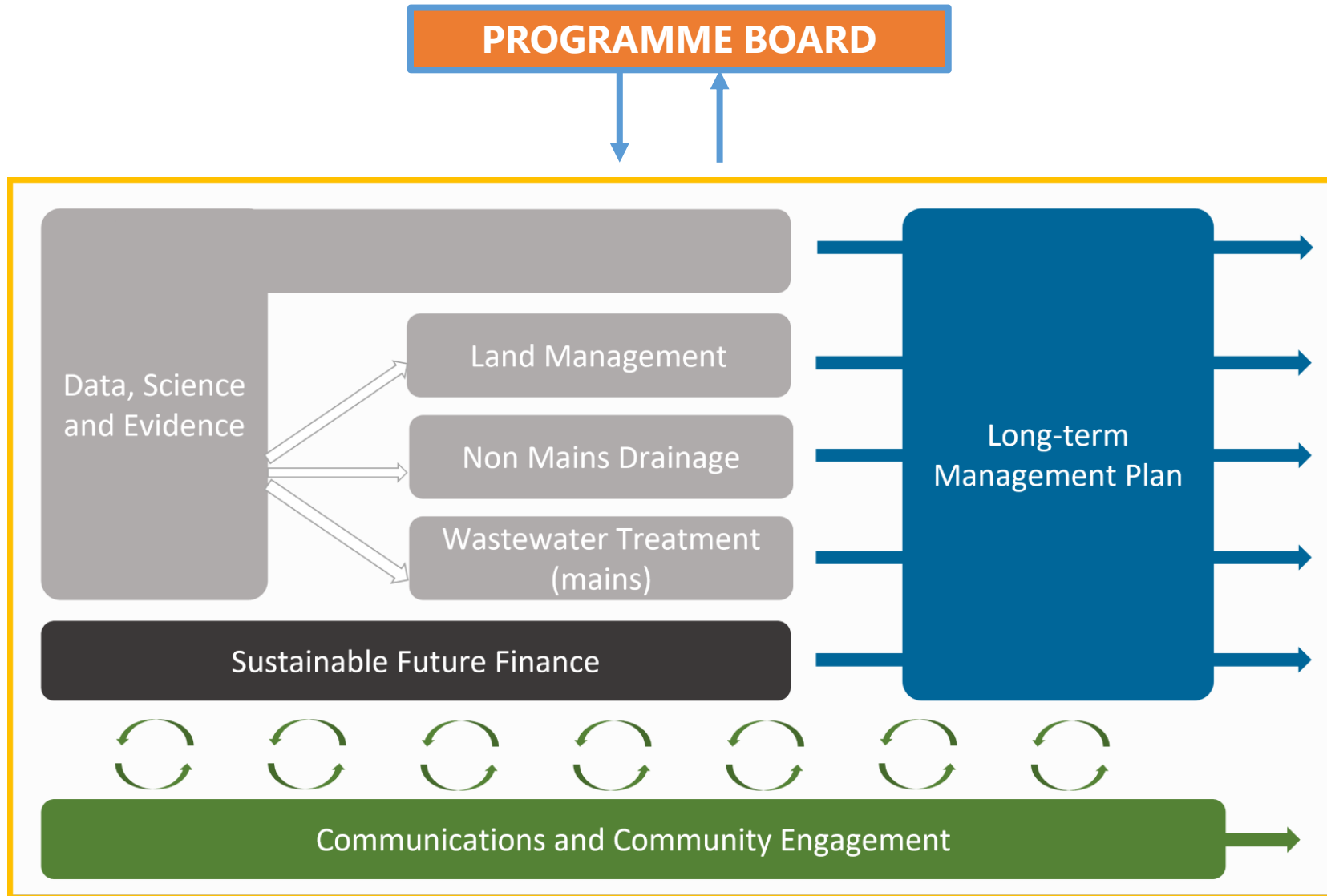
Another symptom of climate change is more extreme or erratic weather patterns. Periods of very heavy rainfall or prolonged hot dry weather are becoming more common. Heavy rainfall increases the level of nutrients and bacteria washed into the lake, from highways, sewers, septic tanks and farmland. Prolonged hot sunny weather makes ideal conditions for algae to thrive

Seasonal variation in tourist numbers

The population living around the lake can double between winter and summer, putting an extra load of nutrients into septic tanks, wastewater treatment works and sewage facilities at campsites.

Invasive Species

Structure



Early partnership outputs:

- **Sustainable Finance** – Exploring sustainable finance options and grants (secured sponsorship from the Great North Swim and funding from the Windermere Big Give)
- **Land Management:** REVERE Project, Grasmere Pilot – building synergies with water quality, natural flood management and climate resilience, Developing Farmer Facilitation network, exploring options for Environment Land Management Schemes
- **Data , Science and Evidence:** EA source apportionment Model, Appointment of a Windermere Scientist, Four Big Windermere Surveys, Development of a Windermere Integrated Science Plan
- **Comms and Engagement:** Love Windermere Website, Engagement events, Appointment of a Comms and Engagement lead, Materials
- **WWTW:** United Utilities have announced £41m of investment to significantly reduce spill activations from overflows within the Windermere catchment. £19m of this investment is being accelerated for delivery between 2023 – 2025.
- **Non- Mains Drainage** – Building on Windermere Reflections; - updated and mailed out the Windermere Property pack available on the [Call of Nature Website](#) to help home owners and businesses look after their sewage system. A set-up of grants to support community septic tank emptying schemes. Development of an innovative trial system to remove excess Phosphorus from non-mains systems once systems are compliant with General Binding Rules. Training for communities on Septic Tank Maintenance.

Website:

<https://lovewindermere.co.uk/>

X: @LoveWindermere

Instagram: love.windermere

