



Rivers Trusts and NIEA Working in partnership

**Lakes Symposium
5th October 2012
Stormont**

**Mark Horton BSc(Hons) MSc
Northern Ireland Development Officer**

Registered in England and Wales as a company limited by guarantee
Company Registration No: 5136671 Charity Registration No: 1107144
Registered/Head Office: Rain-Charm House, Kyl Cober Parc, Stoke Climsland, Callington, Cornwall PL17 8PH
Telephone: +44 (0) 1579 372 142

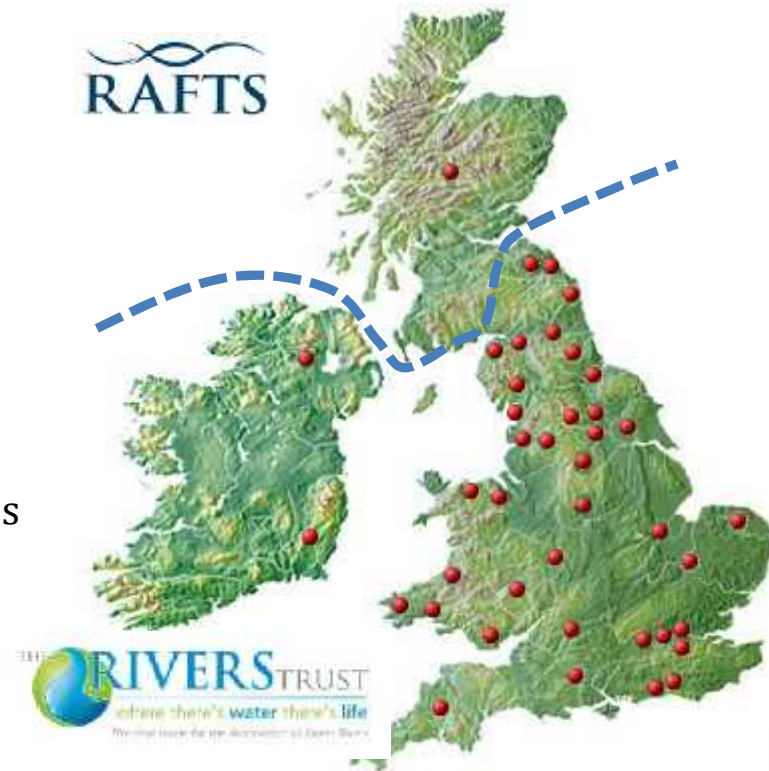


What are Rivers Trusts?

- Charities established to look after a **whole river catchment** or area with a number of waterbodies
- The Rivers Trust - 41 full-member trusts across England, Wales (over 90% coverage) and Ireland
- Rivers and Fisheries Trusts of Scotland - 95% coverage

Key features of all Trusts

- ‘wet feet’ organisations ***not*** lobbying organisations
- A grassroots – “bottom up” movement
- Empowering people to take action in their local community
- Identifying new funding sources and redirecting existing funds to be more effective
- Partnership working key to delivery
- Contributing to local and EU Objectives
- Recognised as river basin based deliverers



Rivers Trusts in Northern Ireland

- BREA – first trust in NI
- Growing interest led to BREA becoming a point of contact
- NIEA recognise the potential for Trusts to be key deliverers in WFD POM's
- NIEA funding a Rivers Trust NI Development Officer Post
- Start-up fund
- Partnership Agreements
 - NIEA/RT
 - Loughs Agency/RT
 - Being replicated in other Departments



A river trusts' catchment area is its 'area of interest' as a charity. It will aim to work with those in the 'area' that are the owners/users to achieve its charitable objectives



Whole catchment/ecosystem approach to management

- In many cases Rivers and Lakes are inter-dependant features
- Included in the objects of Trusts charitable objectives.

*“To conserve, protect, rehabilitate and improve the **rivers, streams, watercourses and water impoundments of the catchments comprising the rivers of the Ballinderry Catchment, including adjacent estuarine and coastal areas...**”*



Ballinderry River flowing into Lough Neagh



Rivers Trusts working with NIEA

- Vehicles for partnership
 - Water Framework Directive
 - Water Quality
 - Morphology
 - Public Engagement
 - Habitats Directives
 - Priority Species
 - Priority Habitats



Riverfly
Monitoring
Initiative



Fish
Migration
Obstacle
Assessment



Why the need for community water quality monitor?

- Ongoing intermittent and persistent pollution pressures in river catchment – RMI means more eyes on the river
- Identified the need for a ‘local’ water quality monitoring group by Trusts and Angling Clubs across NI
- NIEA operational monitoring reduced from annual to 3-year rolling programme



The method

- Volunteers trained to use an approved, standardised, methodology
- Monitoring points picked by volunteers
- Trigger levels set by NIEA
- Monitoring carried out on monthly basis
- Data submitted to local project coordinator
- Trigger level breeches varified locally
- Confirmed breeches reported to NIEA for further investigation

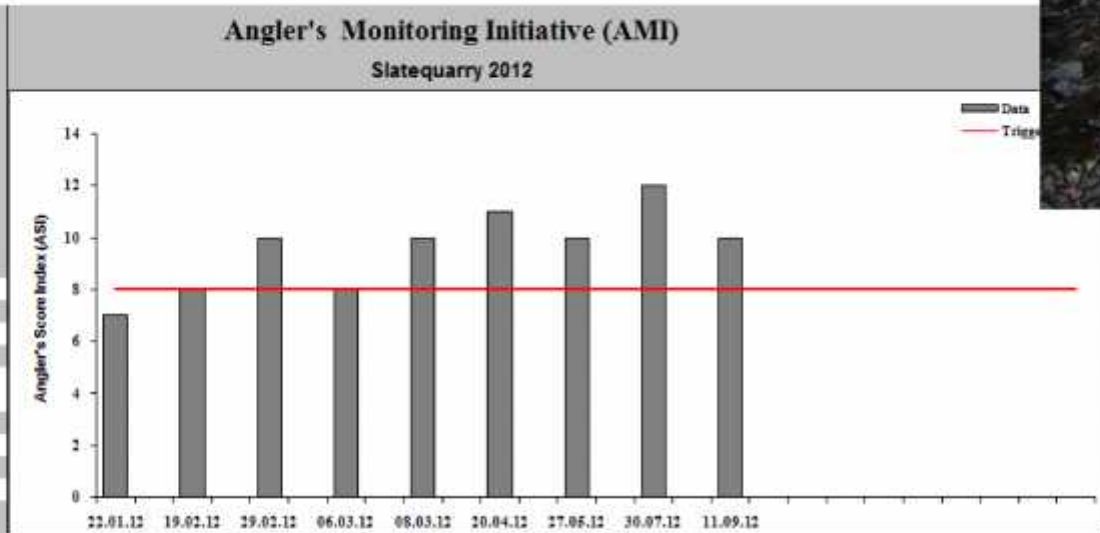


The Results



The Riverfly Partnership

AMI Group
Ballinderry Riverfly Team
River: Rock River
Site volunteer name(s): R Graham
Statutory body contact: NIEA - Eileen Mallon
Site grid reference:



Trigger level

8 - The trigger level is site specific and is set by the statutory body

Date	22.01.12	19.02.12	29.02.12	06.03.12	08.03.12	20.04.12	27.05.12	30.07.12	11.09.12
Category (A-D)	A	A	A	A	A	B	A	A	A
Estimated number*	6	8	2	4	2	10	5	8	10
Category (A-D)			A		A	A	A	A	A
Estimated number*			3		3	3	3	3	5
Category (A-D)								B	
Estimated number*								11	
Category (A-D)	B	B	C	B	C	B	B	A	B
Estimated number*	58	50	300	60	100-150	80	70	5	11
Category (A-D)	B	B	B	B	B	B	B	C	B
Estimated number*	12	12	70	17	20	25	35	100	70
Category (A-D)	A	A	B	A	B	B	B	B	B
Estimated number*	3	2	70	8	40	20	20	25	30
Category (A-D)	A	B	A	B	A	B	B	B	B
Estimated number*	5	10	6	12	4	11	15	40	40
Total	7	8	10	8	10	11	10	12	10
Trigger Level	8	8	8	8	8	8	8	8	8

- Target Groups:**
- Cased caddis
 - Caseless caddis
 - Mayfly (Ephemeroidea)
 - BWO (Ephemeroidea)
 - Flat bodied (Heptageniidae)
 - Olives (Baetidae)
 - Stoneflies
 - Freshwater shrimp
- *estimated number is optional



Assessment of Obstacles to Fish Migration



Registered in England and Wales as a company limited by guarantee
Company Registration No: 5136671 Charity Registration No: 1107144
Registered/Head Office: Rain-Charm House, Kyl Cober Parc, Stoke Climsland, Callington, Cornwall PL17 8PH
Telephone: +44 (0) 1579 372 142



Results and Observations from the Ballinderry River

34 potential obstacles to fish migration

- 23 weirs,
- 10 waterfalls
- 2 'Others' (1 gravel trap and 1 rock groyne)
- 1 bridge
- 1 culvert

7 weirs on the Ballinderry were not shown on 1:50,000 OS map

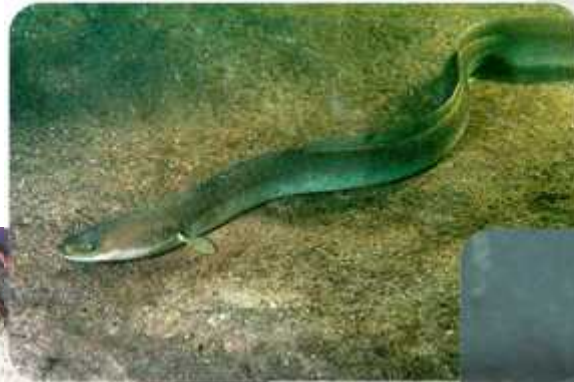
6 that are shown are no longer there

18 recommendations were made on improving the recording form



Taking the assessment forward

- NIEA Hydromorphology team – using initial assessment to priorities obstacles
- Application of the SNIFFER Porosity of Barriers to Fish Passage Tool devised for WFD assessments
- Results will help inform the way forward for improving river for fish species as part of LMA



The Next 12 months

Continue to encourage the development of trust and like-minded groups across Northern Ireland

Continue to find ways of working together – sharing knowledge expertise and resources

Recognise who is best placed to implement the actions in the LMA – making the best use of expertise and resources

Mutual learning and development

Utilise our partnership approach to demonstrate best practice in freshwater conservation and protection





www.theriverstrusts.org.uk

The Rivers Trust
c/o Ballinderry Fish Hatchery Ltd
231a Orritor Road
Cookstown
Co. Tyrone
BT80 9ND

Tel: 028 867 61515

E-mail: mark@theriverstrust.org

Registered in England and Wales as a company limited by guarantee
Company Registration No: 5136671 Charity Registration No: 1107144
Registered/Head Office: Rain-Charm House, Kyl Cober Parc, Stoke Climsland, Callington, Cornwall PL17 8PH
Telephone: +44 (0) 1579 372 142

