



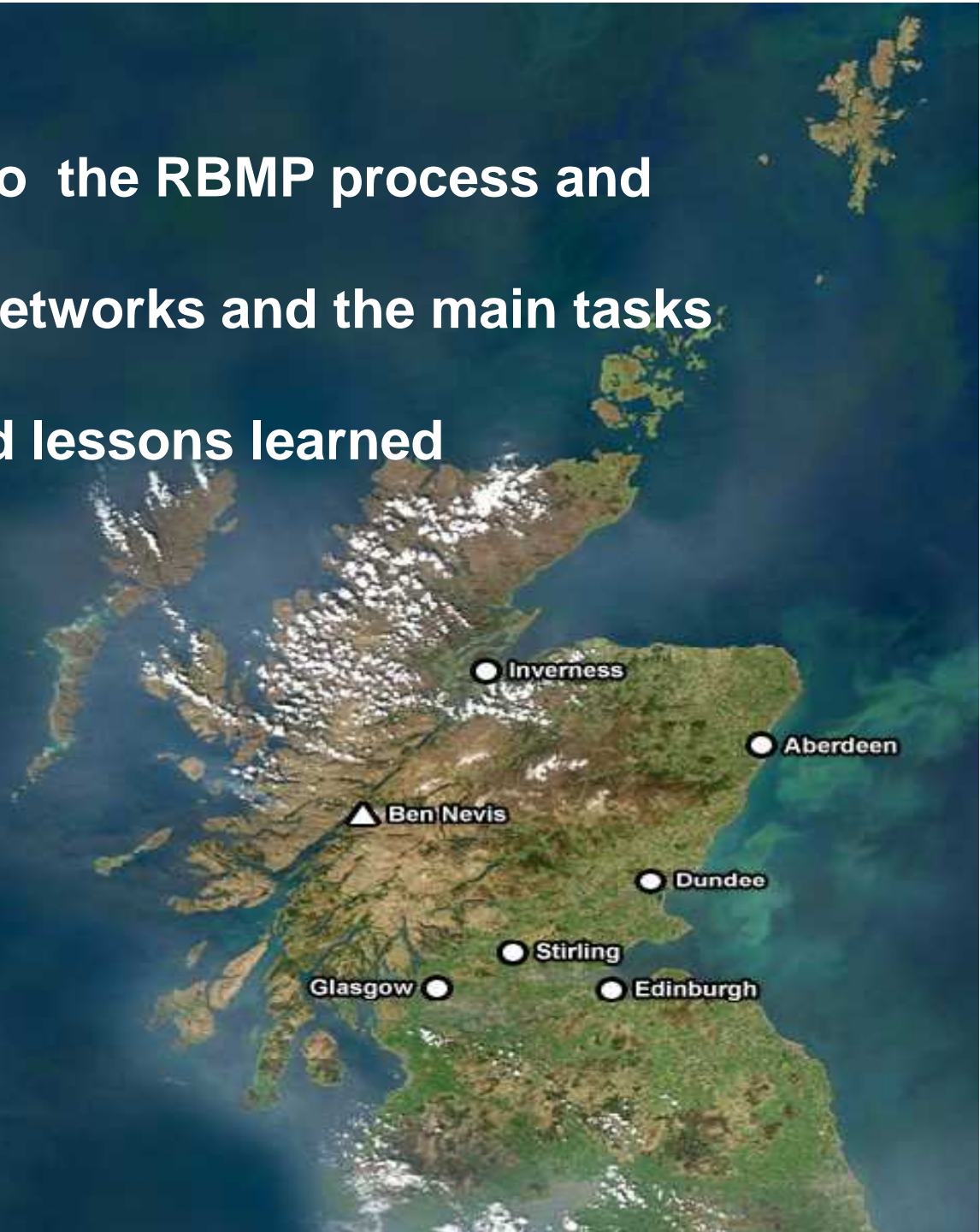
**River basin planning engagement**  
***Successes and lessons learned***

**Anna Griffin**  
**River Basin Planning Co-ordinator**  
**SEPA**



## Today I will outline

- SEPA's approach to the RBMP process and engagement
- How we built our networks and the main tasks delivered
- Our successes and lessons learned



# The River Basin Planning Process

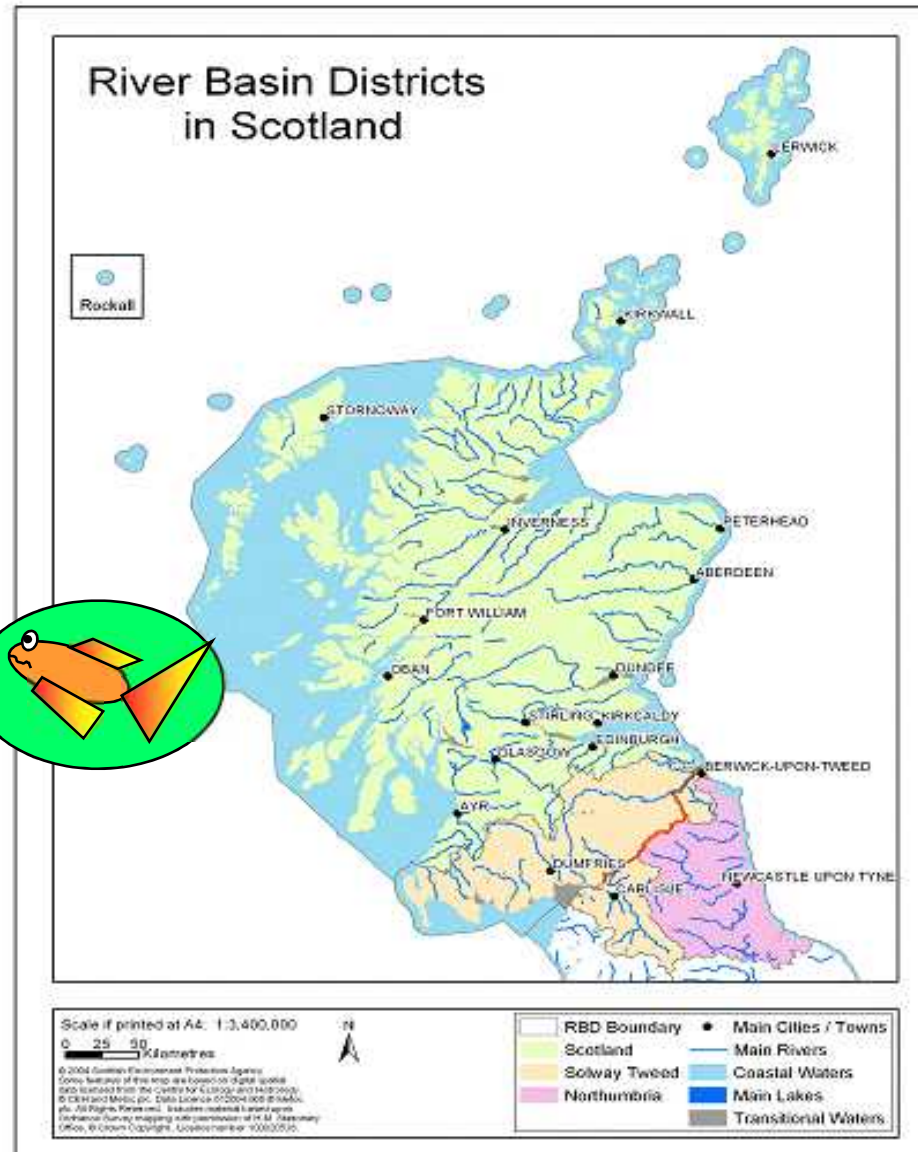
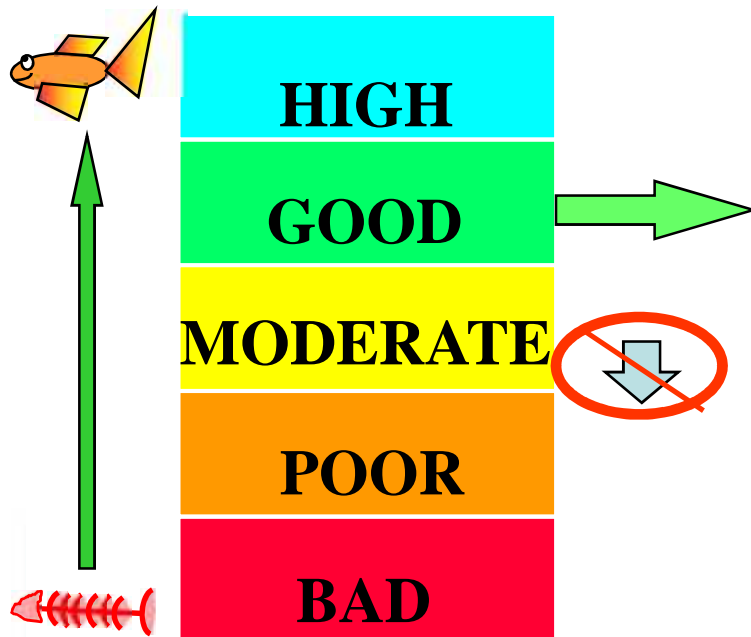


Adapted from CSI WFD (2003)  
*Best practices in river basin planning,  
guidance on the planning process*



# River basin planning in Scotland

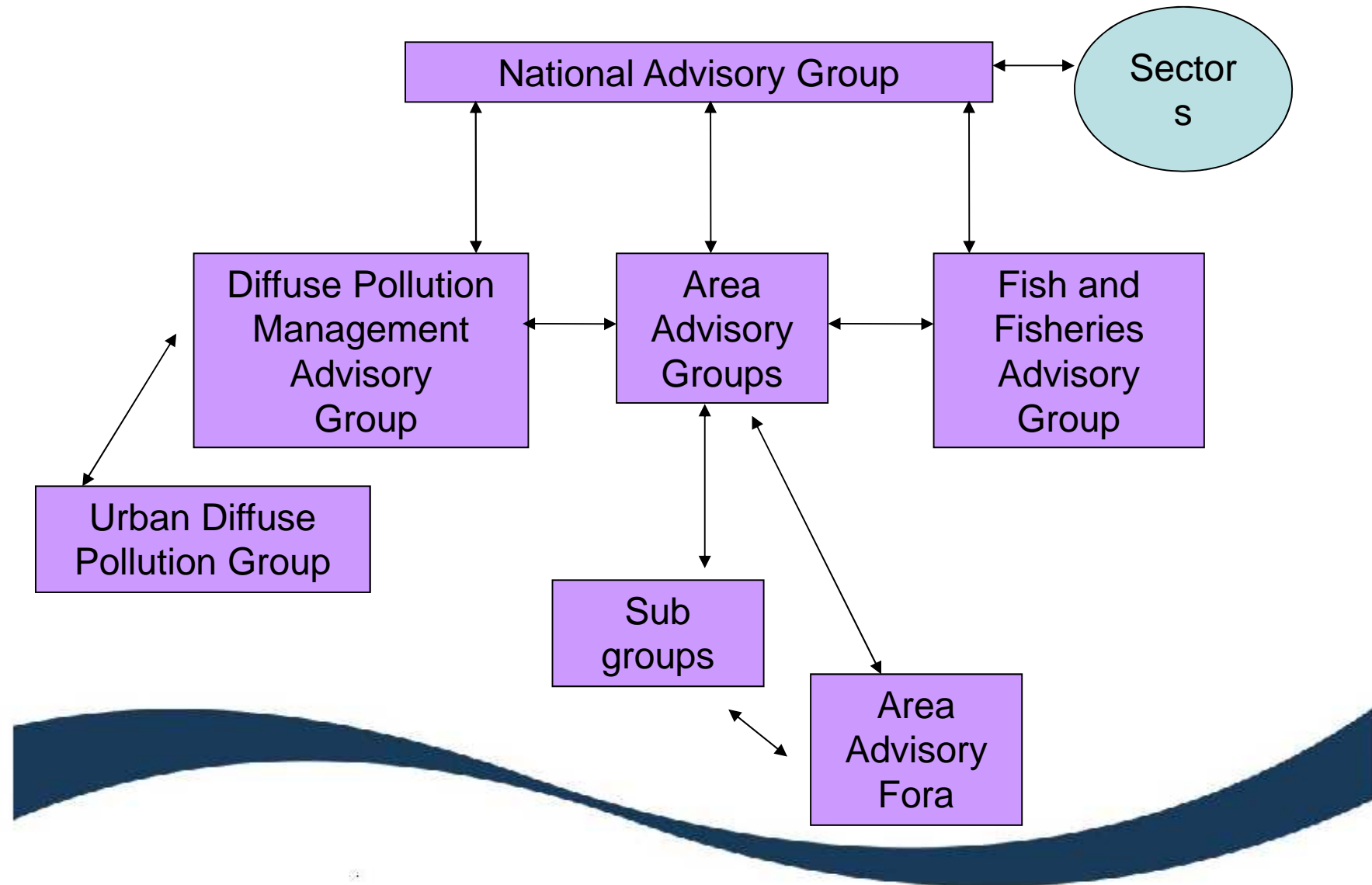
- Scotland
  - Solway Tweed
- SEPA jointly prepare plan with the Environment Agency



# Role and remit of Advisory Groups

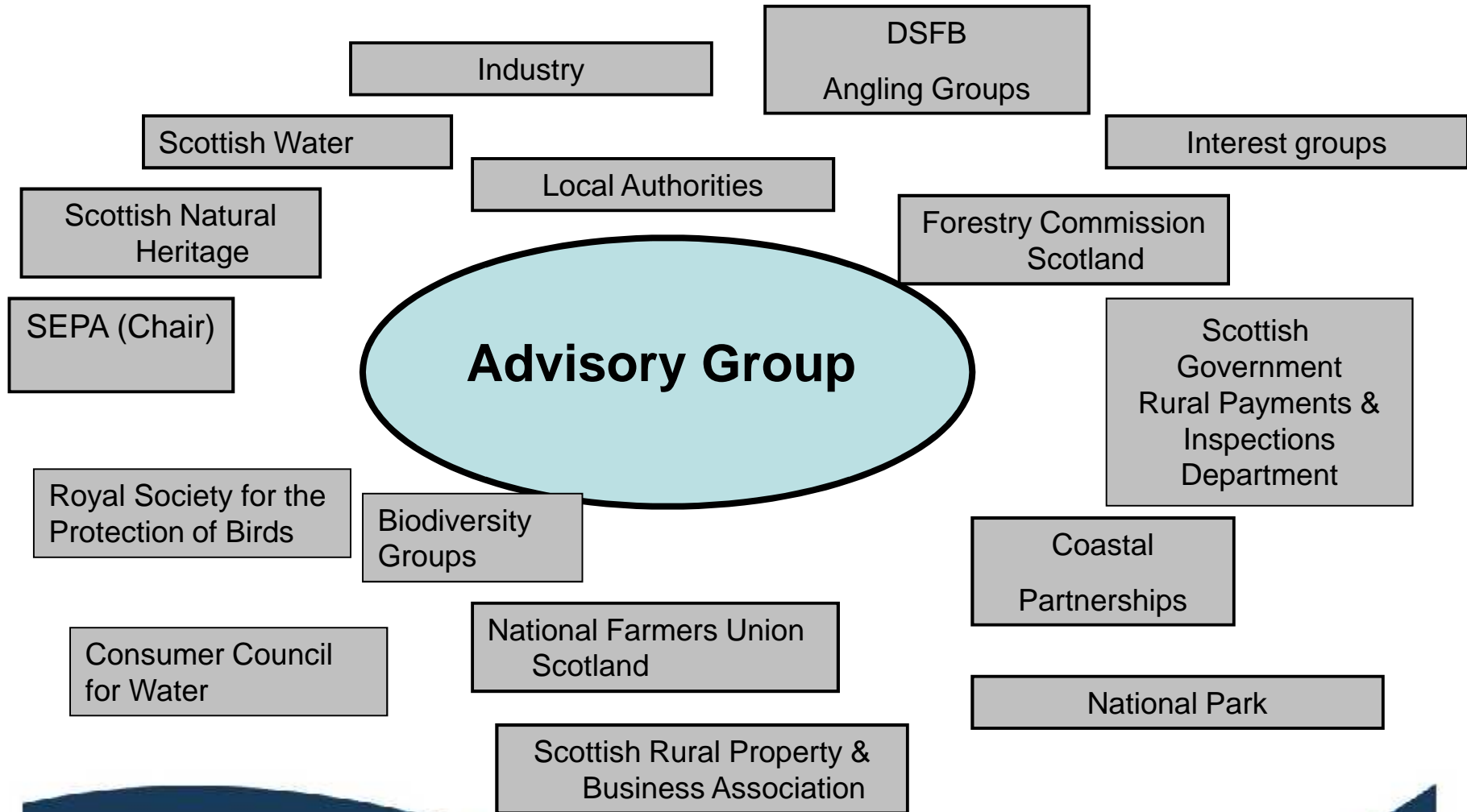
- Advise and lead on non-statutory measures
- Build awareness of statutory measures
- Making links with other measures
- Two scales
  - National scale
    - National Advisory Group
    - Fish and Fisheries
    - Diffuse Pollution Management Advisory Group
    - Urban Diffuse Pollution Group
  - Local – Area Advisory Groups and sub groups

# Stakeholder engagement structure





# Advisory Group membership



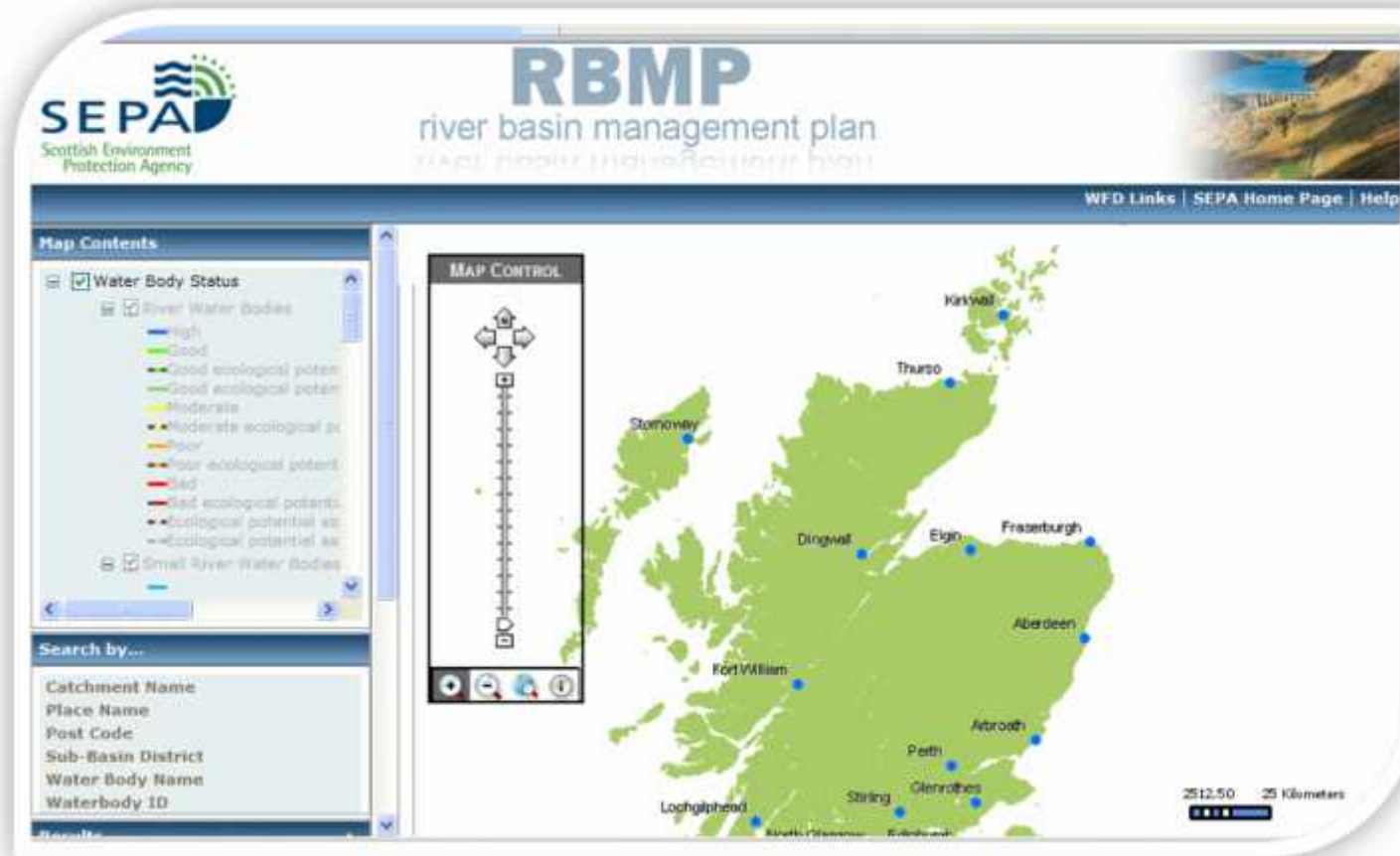
## Resources provided

- **AGs met 4 times per year (now biannual)**
- **each had a designated co-ordinator**
- **established wider stakeholder groups where and when appropriate**





# Resources provided – data and GIS



# Resources provided - water body information sheets

## General details

Water body name:	Black Loch
Water body identifier code:	100335
Area:	50 km <sup>2</sup>
Water body category:	Lake
Baseline:	Y
River basin district:	Solway Tweed
Area advisory group:	Solway
Catchment:	Galloway Coastal
Associated protected areas:	
Associated groundwater:	Stranraer bedrock and extensive sand and gravel aquifers
Responsible body:	SEPA Dumfries & Galloway
Heavily modified:	No
Artificial:	No
Typology:	Lowland Large Medium alkalinity Deep
National Grid Reference:	NX 11216 61556
Latitude:	54.91295
Longitude:	-4.94869

## Current status of this water body

We have classified this water body as having an overall status of Moderate with High confidence in 2008 with overall ecological status of Moderate and overall chemical status of Pass.

This overall classification of status is made up of many different tiers of classification data. A complete set of classification data for 2008 is shown at the end of this document.

## Targets for the future status of this water body

We have set environmental objectives for this water body over future river basin planning cycles in order that sustainable improvements to its status can be made over time, or alternatively that no deterioration in status occurs, unless caused by a new activity providing significant specified benefits to society or the wider environment.

For this water body we have set the overall environmental objectives for the first, second and third River Basin Management Planning (RBMP) cycles as:

Year	2008	2015	2021	2027
Status	Moderate	Good	Good	Good

We have established an ongoing programme of monitoring in order to identify pressures on our water bodies. The pressures listed below contribute to this water body's failure to meet good ecological status. River basin planning allows us to plan improvements for particular parameters over time. We have collaborated with others to identify measures which will act to protect or improve our water environment in order that all water bodies reach good status over successive RBMP cycles.

## Pressures and measures on this water body

The pressures listed below contribute to this water body's failure to meet good ecological status or potential. River basin planning allows us to plan improvements for particular parameters over time. We have collaborated with others to identify measures which will act to protect or improve our water environment in order that all water bodies reach good status over successive RBMP cycles.

The following table shows our collated information on the pressures on this water body, their causes and the measures which could be introduced to mitigate their effects. We have also indicated the current funding status of the measure; with projected measures being potentially funded and agreed measures having funding in place. Finally, we have included information on the potential or actual owner of the measure, the date it will be effective and information on the justification for extending the deadlines or for setting an alternative objective, where appropriate.

Pressure	As a Result of	Assessment Parameter	Objective	Reasons for Failure
	Measure	Funding	Owner	Effective date
Diffuse Source Pollution	Mixed farming	Phosphorus	Good by 2015	
	Non-urban land management measures	Projected	Farmer(s)	31/12/2014

## Future work

Additional work to identify pressures and to develop and implement measures to mitigate their impacts will continue over subsequent river basin cycles.

# Using the networks

## **We talked** and we listened

- **classification processes and results**
- **principles of setting objectives**
- **information on measures, fish barriers and other data**
- **format and scope of drafts**
- **knowledge base**
- **issues and opportunities**
- **local agenda**

# Outcomes

- Added measures
- Added data
- Consultations
  - Scotland and Solway Tweed RBMPs
  - Area Management Plans
  - catchment profiles



## **How can we measure participatory success?**

### **Successes and lessons learned from**

- **Consultation responses submitted**
- **Use of online resources**
- **Meeting feedback**
- **Independent MLURI research**

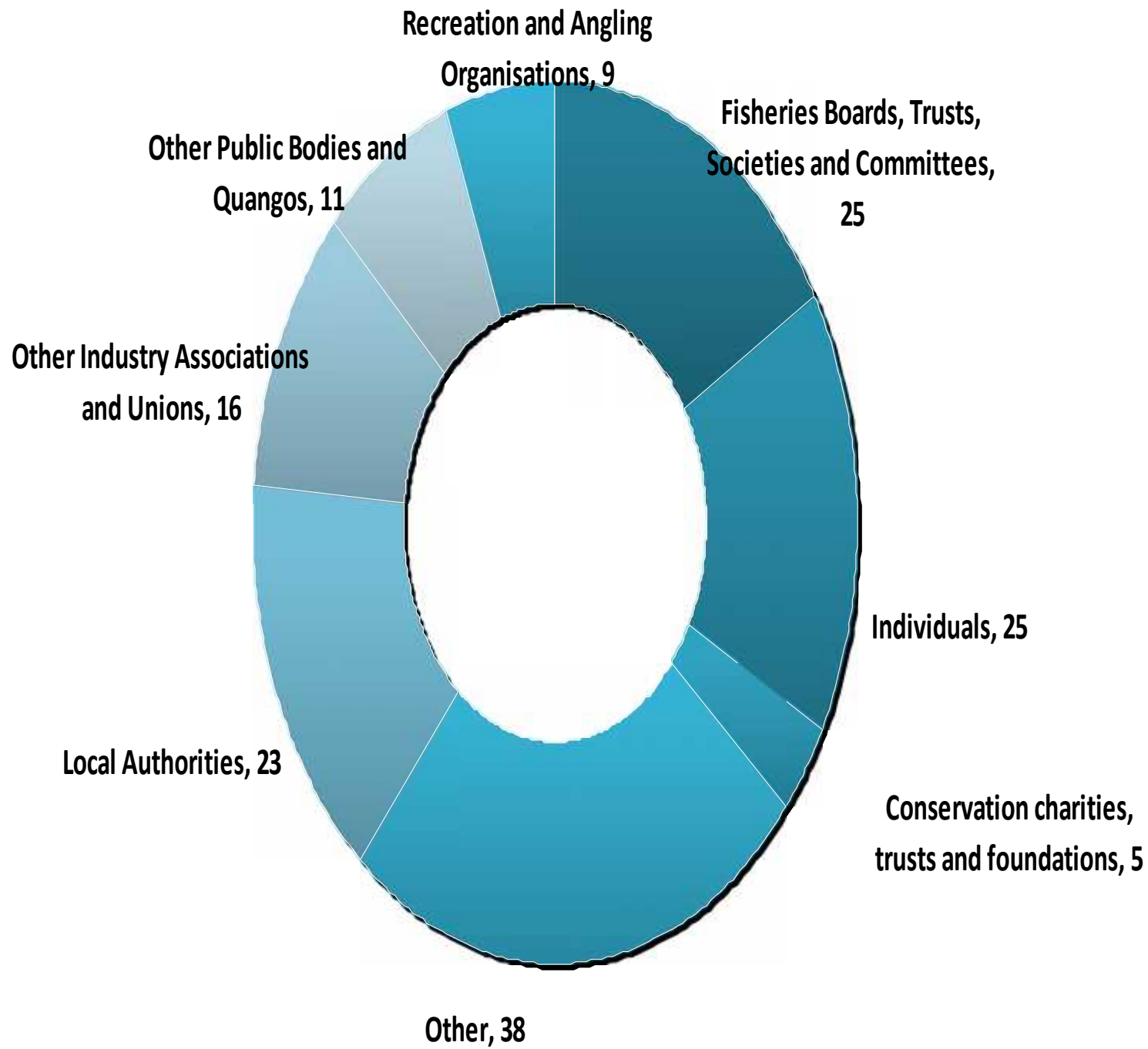


# Consultation responses

## Number and quality of consultation responses

Document	Number of responses
Scotland District RBMP	68
Argyll AMP	14
Clyde AMP	32
Forth AMP	18
North East Scotland AMP	17
North Highland AMP	22
Interactive mapping application (GIS)	13

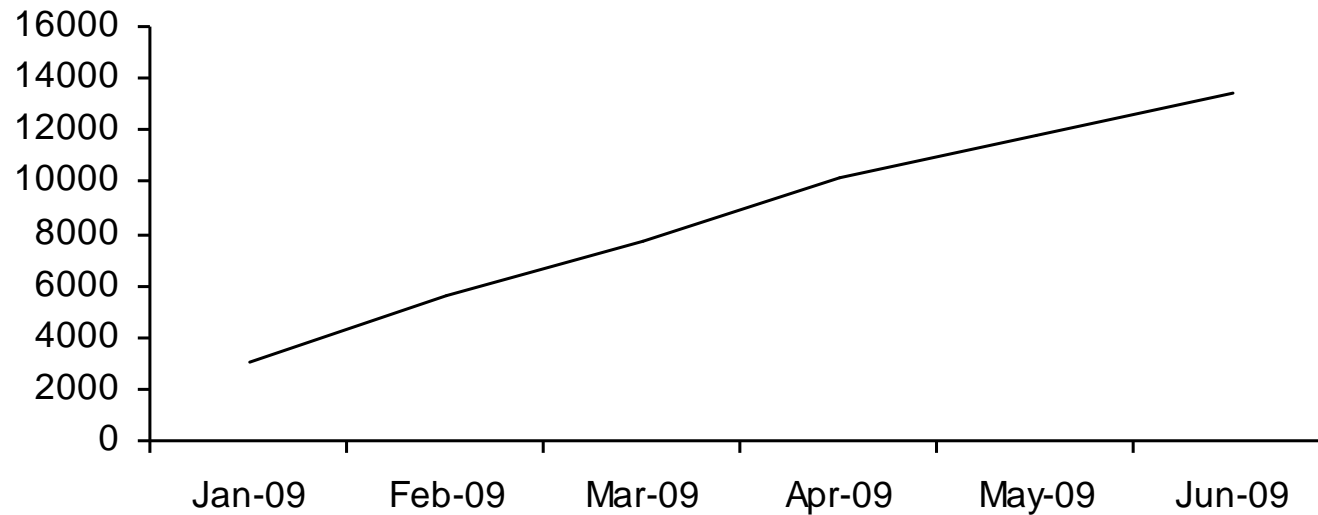
[www.scotland.gov.uk/Topics/Environment/Water/WFD/RBMPFramework/GuidanceNote](http://www.scotland.gov.uk/Topics/Environment/Water/WFD/RBMPFramework/GuidanceNote)





# Use of online resources

Cumulative Unique Views



Total requests January 2010 – July 2010	7,119
Average per month over 6 months	1186.5
Average requests per day	39
Internal Requests	23% (1,699)
External Requests	77% (5,420)



# Beginning to get integration...

objective 3.1 Ensure there is sufficient data on riverine, wetland and riparian habitats and species to inform sustainable management practices									
	Key Partners	Page ref	2003-2004	2004-2005	2005-2006	2006-2007	2010	2015	
<b>Target 3.1.1</b> Improve knowledge of the extent, status and distribution of riverine, riparian and wetland habitats.		Chap II 3-3							
3.1.1.1 Digitally map current and historical wetland sites and use this to target restoration programmes	SEPA, EA, SNH, EN, BFT, TF				●				
3.1.1.2 Digitally map current riparian habitat restoration work and use this to inform future work and establish habitat networks	TFn, BFT, SNH, EN, SEPA, EA, FC, TF			●					
3.1.1.3 Determine the requirements for RHS in the catchment and implement what is practical	SEPA, EA, SNH, EA			●					
3.1.1.4 Identify priority areas of riverine, riparian and wetland habitat that require protection and restoration	SNH, EN, Tfn, BFT, TF				●				
3.1.1.5 Develop a register of designated riverine, riparian and wetland sites in the catchment which includes information on reasons for designation, potential threats and their relevance to local and national biodiversity	SNH, EN, LEAP, TF		●						
<b>Target 3.1.2</b> Improve knowledge and understanding of species of conservation interest.		Chap II 3-3							
3.1.2.1 Review data on priority species such as water voles and assess the need to commission further survey and monitoring work	SNH, EN, LEAPs, TF			●					
3.1.2.2 Coordinate proposed otter surveys by SNH and NWT to ensure a catchment wide approach	SNH, NWT, TF, NNPA		●						
3.1.2.3 Coordinate all existing and incoming species data referenced to the river and river corridor and encourage participation of local experts and recorders to achieve this	SNH, EA, SEPA, TFn, LEAPs, SBRRC, TF								→
3.1.2.4 Review national research on lampreys and assess need for specific local research in the Tweed catchment	SNH, EN, EA, SEPA			●					
3.1.2.5 Continue monitoring and research programmes for salmon, brown trout, sea trout and other local fish species as set out in the Tweed Fisheries Management Plan	TFn								



Catchment planning

Local planning



## Integration - a case study from Tweed

- **Rigorous review of Tweed CMP**
- **Open and frank discussion**
- **Input to all other plans as they are reviewed**
- **On-going dissemination of information on RBMP aims and objectives**
- **Continuing the mindset that measures can be multi-benefit**
- **Effective communication at all levels**



## Independent assessment

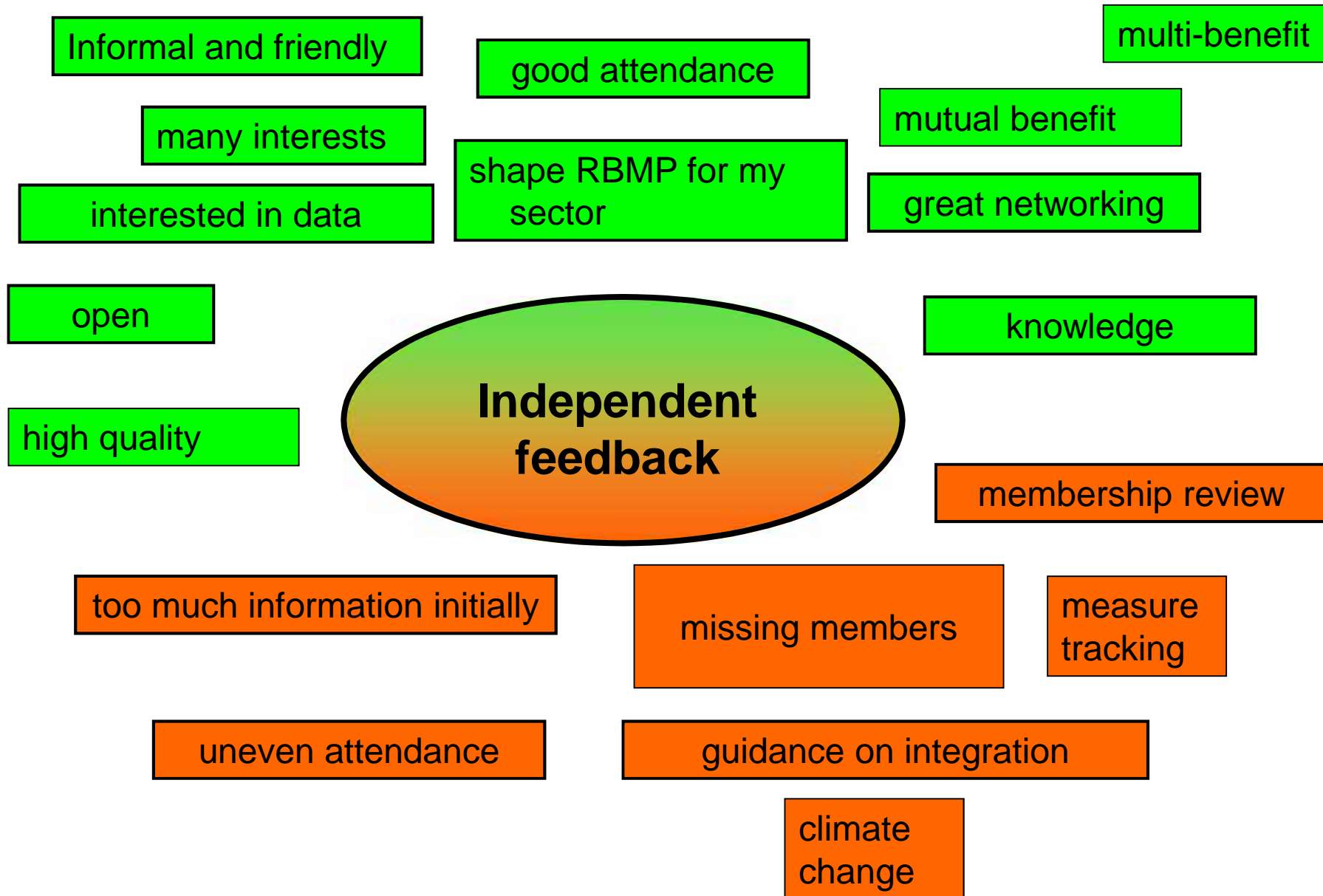
- **MLURI research on our participatory processes**
- **Examined and assessed stakeholder interaction in 5 AGs**
- **Starting to publish results now...**

[www.programme3.net/water345gov.php](http://www.programme3.net/water345gov.php)

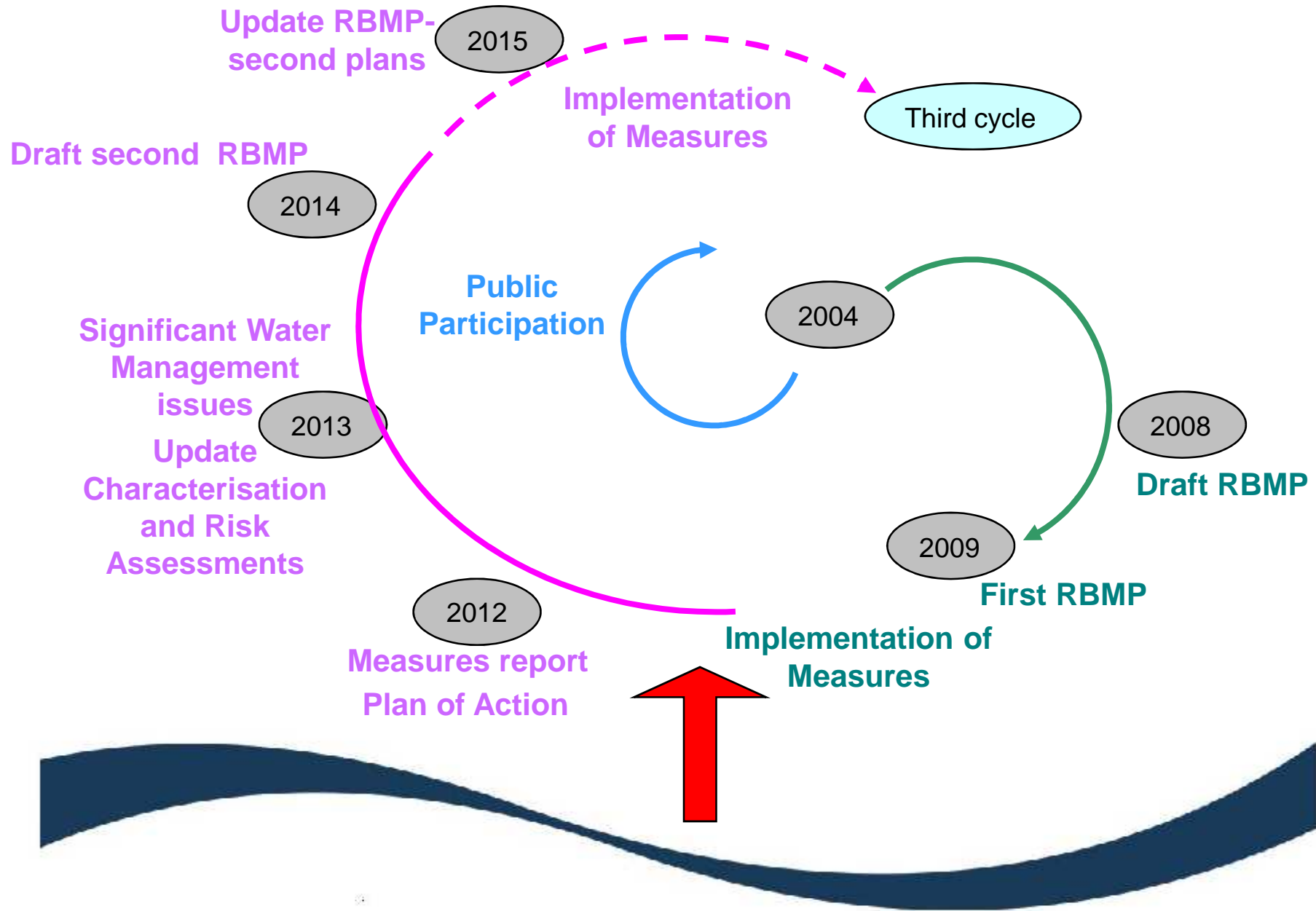
[kirsty.blackstock@hutton.ac.uk](mailto:kirsty.blackstock@hutton.ac.uk)



# The good, the bad and the ugly...



# Getting ready for the second cycle





Any questions?

**[www.sepa.org.uk/water/rbmp](http://www.sepa.org.uk/water/rbmp)**